

Milesight

# Milesight VMS Enterprise

Advanced C/S Architecture · Server-based AI Analytics ·  
Intuitive Live View · Efficient Playback · Scalable Video Wall ·  
IoT Connectivity

OS: Windows 11/10/8

Windows Server 2022/2019/2016/2012/2008



## INTRODUCTION

Milesight VMS Enterprise (ONVIF compliant) is a video management software designed for medium to large projects which can manage lots of network cameras and sensors in different locations and featured with Client/Server architecture. It fulfills your demands and expectations, with rich core functions including live view, playback, E-map, event alarm and smart analytics, etc.

## DATASHEET

## KEY FEATURES

### ▶ System

- Support creating a VMS system by servers in different LANs.
- Support multiple system languages.
- Support multi-layer map.
- Offer a user-friendly GUI for easy operation.
- Support for sharing licenses between failed servers and other servers within the same system, effectively reducing costs for customers.

### ▶ Live View

- Support multi-monitor and 64 live view channels per monitor with main or sub streams optional.
- Support Fisheye Dewarping & PTZ control.
- Support Camera Tour and Layout Tour.

### ▶ Playback & Recording

- Support up to 64 channels synchronous or asynchronous playback.
- Support reverse and times the speed of playback.
- Support quick location & playback by tags, events.
- Support Snapshot, Audio, and Digital Zoom in Playback.
- Support lock of important Video.
- Speed Up of Playback supports up to 256 times.
- Support different recording types, including Schedule and Event.
- Support local and NAS storage.

### ▶ Configuration

- Support device management and grouping, including camera and IoT sensor.
- Support camera configuration, including Front-end Configs and VMS-end Configs, like General Maintenance, Front-end Basic Event, Front-end VCA Event, Advanced, VMS-end Analytics Events and AI Box Events.
- Support real-time display of system and server running status. and dynamic display of resource information.
- Support custom configuration of system, server and client.

### ▶ Alarm

- Support event trigger like Motion Detection, VCA, Audio Alarm, External Input Alarm, Video Loss, Smart Analytics, AI Box Analytics, IoT Sensor, etc.
- Support event action like Recording, Control Camera Output, Call Camera PTZ Preset, Play Sound, Send Email, Capture Picture, Push Alarm to M-VMS Mobile App, etc.

### ▶ Security

- Support password protection.
- Support encrypted video files.
- Support both SSL and TLS encryption methods for emails.

# Milesight VMS Enterprise

Advanced C/S Architecture · Server-based AI Analytics · Intuitive Live View · Efficient Playback · Scalable Video Wall · IoT Connectivity



## Reliable and Scalable System

Developed in advanced Client/Server architecture, Milesight VMS Enterprise is a powerful video management software with reliable and scalable system.

N+M Failover ensures that the data can be well guaranteed. If some servers fail, the standby servers will take over the cameras immediately.



N+M Failover

VMS supports more than 2000-CH per system/  
25 servers per system



Advanced C/S Architecture

M-VMS Mobile is designed from the ground up to enrich the using experience, both IOS and Android users can freely enjoy it.r.



Milesight VMS Enterprise already has AI capabilities enabled, which means even a simple recorded video fragment could be used to generate smart video analytics without any additional sensors or devices regardless of whether the front-end camera is AI or non-AI.

- With the fully integrated AI-based analytics, Milesight VMS People Counting Solution gives intuitive data and saves manpower.
- With the 5\*AI Video Analytics as standard, the server-based Video Analytics contains various smart solutions, which accelerate the path to achieve more professional and intelligent AI solutions.
- Enabled with ANPR algorithm to achieve server-based ANPR solutions regardless of whether the camera is an LPR one or not, making the recognition attributes of license plate and vehicle much easier and more efficient.
- Support Fall Detection and Face Recognition that is compatible with AI Box, allowing users to centrally manage AI Box and alarm events on VMS Enterprise and increasing the feasibility of practical project applications for customers.
- The integration of Milesight sensors allows for the seamless gathering of data from IoT sensors, enabling the generation of actionable insights.

## Smart Analytics



## Event & Alarm

With data priorities processing and clear category of Alarm Data, Milesight Event & Alarm delivers more intelligent interfaces to focus on the target event that matters to you.





# Milesight VMS Enterprise

Advanced C/S Architecture · Server-based AI Analytics · Intuitive Live View · Efficient Playback · Scalable Video Wall · IoT Connectivity



## Video Wall

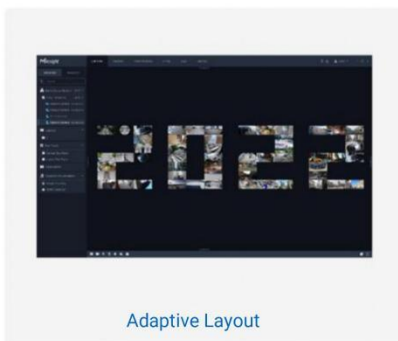
The remote configuration and operation control make the Video Wall as a simple but powerful way to manage monitors remotely. It helps the users get the intuitive images presented by multiple cameras at the same time. The custom screen combinations & split also improve the efficiency of work for the users.



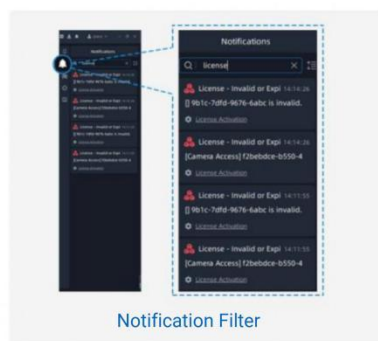
## Intuitive Live View

The simple but powerful preview interface gives users an intuitive visual experience, helping them to better access the appropriate data and image information.

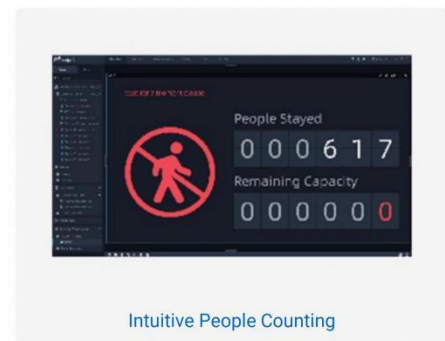
- The ultimate interface flexibility of VMS Enterprise can realize adaptive layout of the preview interface according to the number of channels you choose, making full use of the screen space.
- The Notification panel enables the users to filter the desired notifications by keywords, allowing them to receive messages in real time and achieve message effectiveness.
- Visualization of the preview screen is enhanced by the acquisition of visual data for People Counting and Traffic Detection.



Adaptive Layout



Notification Filter

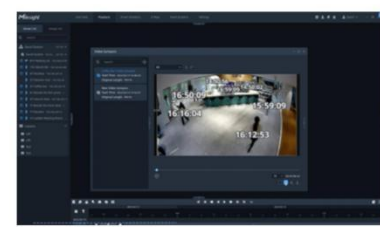


Intuitive People Counting

## Functional Playback

The functional Playback helps the users quickly get the desired videos and evidence footage with various playback modes.

- Smart Search enables the users to keep an eye out for relative movement in the specific area. It makes the playback target clear and saves time.
- Split Playback is endowed with an effective playback feature, as the users can divide the chosen time interval into several video segments by time period or the number of channels.
- With the visual timeline, the recording becomes more user-friendly by using colors to distinguish different event categories.
- Milesight Video Synopsis can generate a condensed and summary representation of a long video sequence, providing a concise overview of the original video by capturing the essential events and transitions within a significantly shorter time frame.
- With the ability to browse through large amounts of video footage efficiently, Timeline Thumbnail can rapidly locate specific events that matter to you.



# Milesight VMS Enterprise

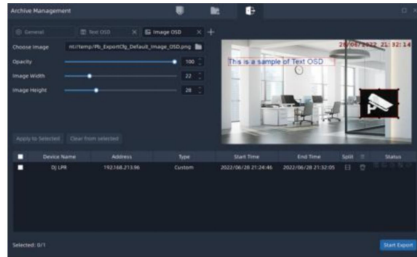
Advanced C/S Architecture · Server-based AI Analytics · Intuitive Live View · Efficient Playback · Scalable Video Wall · IoT Connectivity



## Flexible Export

For the best offline playback experience, the flexible Export streamline the process of reviewing.

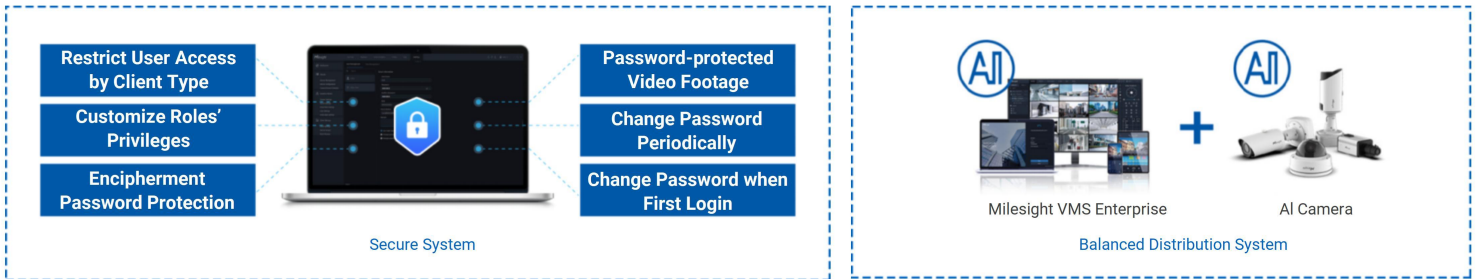
- Among the multiple export ways, the unique EXE format brings security, functionality and compatibility as it includes an executable player with the video and audio data, without a need to install additional video players.
- Multiple kinds of customized overlays give the users abundant playback experience, which include text, timestamps and image OSD.
- File transcoding guarantees fluid video experience especially for remote playback even in a poor network connection by reducing the stream data via lowering resolution, bitrate, or framerate.



## Fault Tolerance & Security

Milesight VMS Enterprise levels up the security with different privileges and multilayered secure encryption mechanisms, and features reliable performance with comprehensive protections.

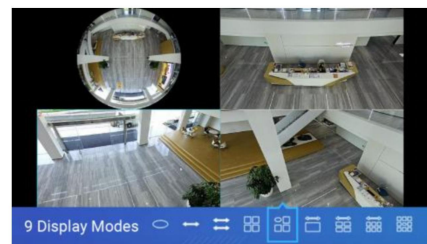
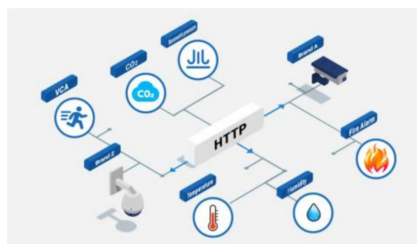
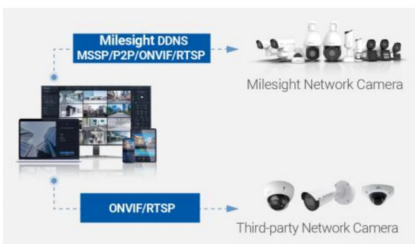
- A highly developed user/role management function allows detailed user-dependent definition of rights and responsibilities.
- The Balance Distributed System Architecture increases server performance and reduces server cost, better guaranteeing the flexible running of the system.



## High Compatibility

As Milesight VMS Enterprise is tailored for mid-to-large installations, then the high compatibility ensures it can supports thousands of cameras in a system regardless of their brands and locations.

- The high compatibility of VMS allows the third-party cameras access to the system through ONVIF/RTSP. For the Milesight cameras, there are multiple ways to be used in the connection, such as Milesight DDNS/P2P/ON V IF and RTSP.
- VMS supports trigger alarms from third-party cameras via HTTP, including recording, PTZ preset, showing notification and soon.
- Milesight VMS Enterprise supports two ways of dewarping, bringing users great flexibility during operation. On-board dewarping can be easily integrated with third-party VMS. And the Client-side dewarping supports flexible viewing modes in Live View and Playback.





# Milesight VMS Enterprise

Advanced C/S Architecture · Server-based AI Analytics · Intuitive Live View ·  
Efficient Playback · Scalable Video Wall· IoT Connectivity



<b>Software</b>	<b>Milesight VMS Enterprise</b>	
<b>Architecture</b>	Client/Server architecture	
<b>Client</b>		
<b>Hardware Requirement</b>	CPU: Intel Core i5 @2.9GHz or above Memory: 4GB or above HDD: HDD/SSD GPU: Recommend, discrete graphics card will be better Graphic Memory: 2GB or more Display Resolution: 1280 x 720 or above The requirement given are recommended minimum	
<b>OS</b>	Windows 8/10/11	
<b>Live View</b>	Simultaneously Playing	Up to 64-CH, self-adaptive layout
	Multi-monitor	Live Screen, Alarm Screen, Full Screen, E-map, Playback The number of monitors is unlimited, but only one monitor can be designated as the Alarm Screen or Full Screen.
	Tour	Support (Camera Tour, Layout Tour)
	Video Walls	Up to 100 Video Walls per System
		Display up to 64 IP Channels per screen
		Custom Screen Combinations & Split
		PTZ and Digital Zooming Operations
		Remote Desktop Sharing
	Remote Control & Monitoring	
Dynamic Visualization	People Counting Live View, Traffic Detection Live View	
Function	Snapshot, Record, Audio, Talk, Digital Zoom Fisheye Dewarping: <b>Ceiling Mount:</b> 10, 1P, 2P, 4R, 103R, 1P1R, 1P4R, 1P6R, 108R <b>Wall Mount:</b> 10, 1P, 4R, 103R, 1P1R, 1P4R <b>Table Mount:</b> 10, 1P, 2P, 4R, 103R, 1P1R, 1P4R, 1P6R, 108R PTZ Control, Stream Switching, Instant Playback, Display of Tracking Box and Area, Notification, ANPR Preview	
<b>Playback and Recording Management</b>	Playback Channel	Up to 64-CH synchronous or asynchronous playback
	Recording Type	Schedule/Event
	Playback Type	Schedule/Event/Tag
	Export Type	.mp4/.avi/.mkv/.asf/.exe (The .exe file has a built-in player.)
	Export Overlays	Text/Timestamp/Image/Privacy Mask/Transcoding

# Milesight VMS Enterprise

Advanced C/S Architecture · Server-based AI Analytics · Intuitive Live View ·  
Efficient Playback · Scalable Video Wall · IoT Connectivity



<b>Playback and Recording Management</b>	Function	Snapshot, Audio, Digital Zoom, 1/32x~256x Slower/Faster Play Speed, Rewind Play, Fisheye Dewarping, Visual Timeline, Split Playback, Lock, Tag, Smart Search, Video Synopsis, Thumbnail Retrieval, Synchronous & Asynchronous Playback, Event Mask	
<b>Event &amp; Alarm</b>	Event Configuration	Alarm Type: Motion Detection, Audio Alarm, External Input Alarm, VCA Events, Smart Analytics Events, AI Box Analytics Events, IoT Sensor Events, Timer Event, Connection Issue, System Events, Server Events, HTTP Event, Client Trigger, etc. Alarm Action: Emergency Recording, Control Camera Output, Capture Picture, Add Tag, PTZ Movement, Show Notification, Show Text Overlay, Email, Pop up Video, Play Sound, Send HTTP Request, Show on Alarm Screen&Full Screen, Push Alarm to Mobile APP, etc	
		Arming Control	
		Alarm Priority and Alarm Category configuration	
	Event & Alarm Search	Event Search, Alarm Search and Action Search	
	Alarm Center	Display Live View, Playback, Picture and Map	
<b>Settings</b>	Devices	Camera Management	Channel: Support more than 2000 channels per system (The numbers given are recommended minimum, additional scalability would be determined based on specific usage requirements.) Protocol: MSSP/ONVIF/RTSP/P2P/Milesight DDNS
		IoT Sensor Management	Sensor and Gateway Management Support WS301, VS121, VS132, VS133, WS558/WS50X, WS101 Protocol: Milesight IoT Gateway
	Device Groups	Cameras and IoT Sensors Grouping	
	Camera Configuration	Front-end Configs, including General Maintenance, Front-end Basic Event, etc. VMS-end Configs, including VMS-end Analytics Events and AI Box Events	
	Camera Record Schedule	Camera Record Schedule	Record settings
	Video/Audio Compression	Video Compression: H.265/H.264	
		Audio Compression: G.711 U-Law/G.711 A-Law/AAC LC/G.722/G.726	
		Video Resolution: 12MP/9MP/8MP/6MP/5MP/4MP/3MP/1080P/UXGA/720P/D1/VGA/CIF/QCIF	
	System & Servers	N+M Failover, Online Update, License Activation, Decoding with Multiple Graphic Cards, Local and NAS storage, Intuitive Dashboard, Customizable User Permissions, Multiple Hotkey	
		System Languages: English, Chinese, Traditional Chinese, Russian, Japanese, Polish, German, French, Turkish, Thai, Italian, Spanish, Bulgarian and Dansk	

# Milesight VMS Enterprise

Advanced C/S Architecture · Server-based AI Analytics · Intuitive Live View ·  
Efficient Playback · Scalable Video Wall· IoT Connectivity

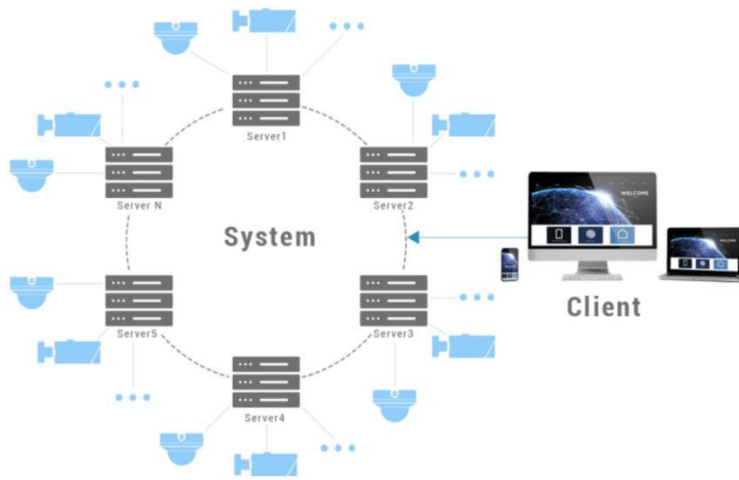


<b>Smart Analytics</b>	ANPR	ANPR Watch List, ANPR Result Search, Traffic Report, Picture Storage, Radar Data Integration, Dynamic Visualization
	VMS-end People Counting	People Counting Groups, People Counting Report, Dynamic Visualization
	IoT	Sensor Control, Sensor Data Report
	Face Recognition	Face Watch List, Face Result Search, Basic Settings
<b>Smart Analytics</b>	Third-party Connect	Access Control Support the DS-K260X model of Hikvision
	Video Analytics Server	Graphic: NVIDIA graphic card (It is required with a recommended computing power of 7.5 or higher, and a recommended memory capacity of at least 6GB.) OS: 64-bit Operating System
<b>E-Map</b>	Multi-layer map, Multiple attribute configuration of elements, Shared map, Event alarm flashing prompt	
<b>Server</b>		
<b>Hardware Requirement</b>	CPU: Intel Core i3 @2.3GHz or above Memory: 8GB or above HDD: HDD/SSD NIC: 1GB or above The requirement given are recommended minimum	
	OS	
<b>OS</b>	Windows 8/10/11, Windows Server 2008/2012/2016/2019/2022	
<b>Online Clients</b>	300	
<b>Servers</b>	Support more than 25 servers per system, 25 is a recommended minimum.	
Performance is highly dependent on PC capacity, and the recommended configuration is just for reference.		
<b>M-VMS Mobile</b>		
<b>OS</b>	iOS: iOS 11 or above. Android: Android 9.0 or above.	
<b>Live View</b>	Multiple Live View, Layout, Group, PTZ operations including preset, patrol and pattern, Two-Way Audio, Client Trigger,	
<b>Playback</b>	1/32, 1/16, 1/8, 1/4, 1/2, 1X, 2X, 4X, 8X, 16X, 32X, 64X, 128X and 256X adjustable playback 4-CH Synchronous or Asynchronous Playback 4-CH Split Playback	
<b>Alarm</b>	Receive Event Messages from Milesight VMS Enterprise	
<b>Manage</b>	File Management	
<b>Connection</b>	IP Address/P2P	

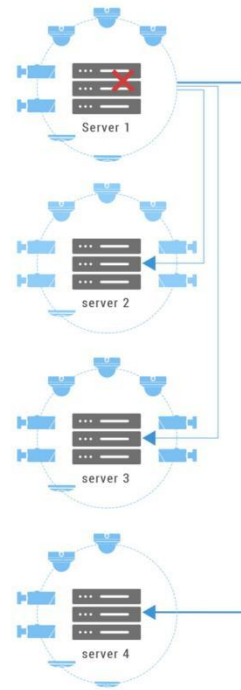
V3.2

# Milesight VMS Enterprise

Advanced C/S Architecture · Server-based AI Analytics · Intuitive Live View · Efficient Playback · Scalable Video Wall · IoT Connectivity



One system manages several servers. Every server shares the same data file.



Taken over by multiple servers simultaneously. Cameras will be allocated to servers automatically to do load balancing.

Any functioning server with failover function on and valid licenses will take over the cameras of the failed server. The cameras with record on will keep recording.

## Key Functions



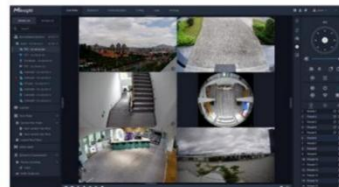
Milesight Network Camera



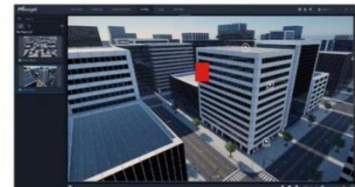
Milesight VMS Enterprise



Third-party Network Camera



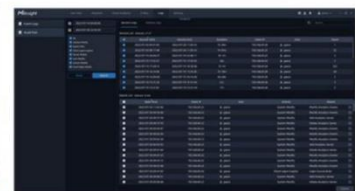
Live View



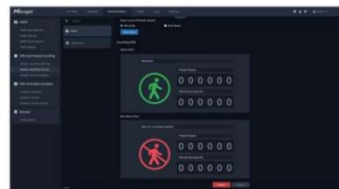
E-Map



Playback



Event & Alarm



Smart Analytics



Settings

